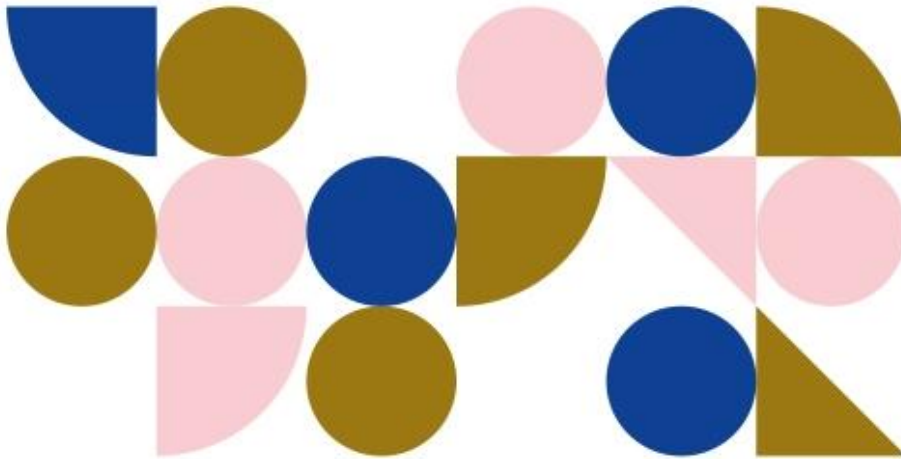


CASA
ESPRESSO
—
COFFEE
ROASTERS

ETHIOPIA
•
MASHA FARM



Produced by farmer Haile Gebrsellassie, this coffee comes from the 1500 hectare Masha farm in the Sheka zone of Ethiopia. Opened in 2014, Haile grows Heirloom Varietals at 1680 – 1875 masl and dries the coffee on raised beds.

60g per litre for filter styles and 1:2 brew ratio for espresso. We use 18 in and 36g out.

Refreshing blackberry acidity gives way to a ripe peach sweetness and a light black tea finish.

@Casa_Espresso