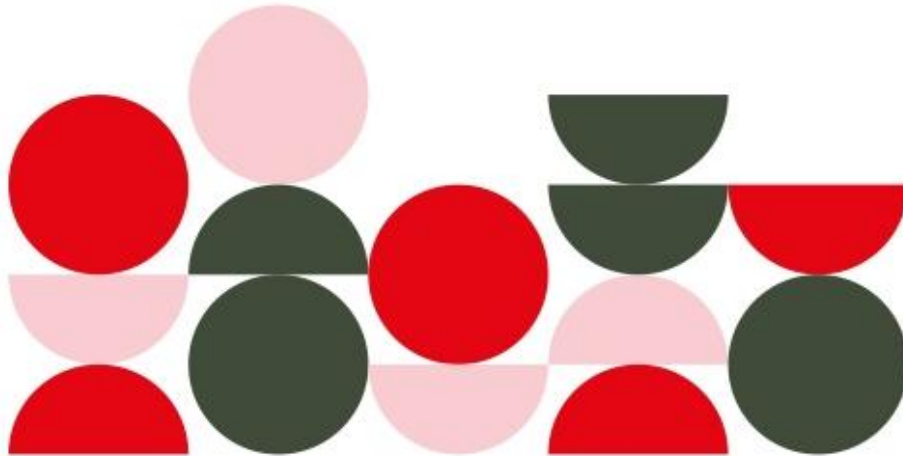


CASA
ESPRESSO
—
COFFEE
ROASTERS

INDIA
•
BAGANEHEDDAL NATURAL



Mr. Ravi Ramu grows this selection 9 varietal at 1,280 masl, on his Baganeheddal estate in the Chikmagalur region. With help from Olam, he picks his ripe coffee cherries at prime sweetness using a brix meter and also utilises shaded raised beds to aid even drying of the coffee for a higher quality lot.

65g per litre for filter styles and 1:2 brew ratio for espresso. We use 18 in and 36g out.

This is a smooth and sweet yet complex coffee. Upfront it is reminiscent of slightly fruity and deep red wine, dried fruit, cola and stewed pear. Gentle acidity with loads of body!

@Casa_Espresso