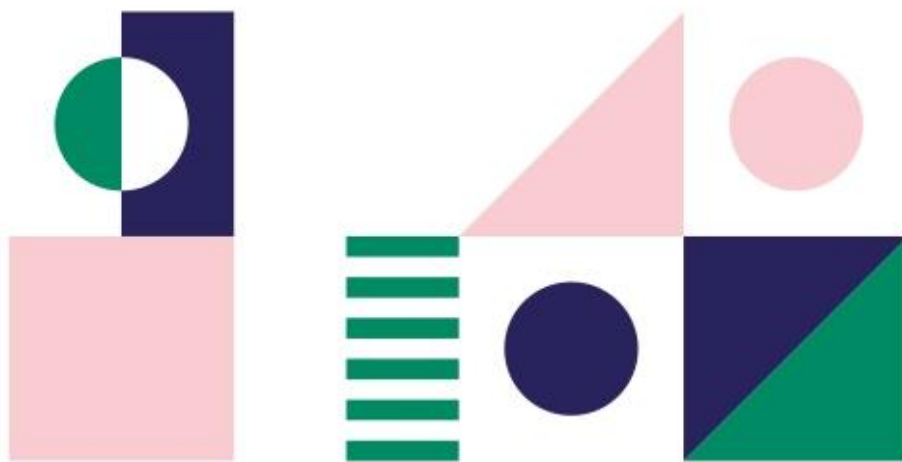


CASA  
ESPRESSO  
—  
COFFEE  
ROASTERS

JAVA  
•  
SUNDA HEJO NATURAL



Situated in West Java, the Kelompok Tani Mandiri Co-op consists of over 1000 smallholder farmers that nurture Catimor and Typica varieties between 1200 and 1600 masl. The ripe cherries are picked, floated for ripeness and sorted, then dried on raised beds for around 25 days.

65g per litre for filter styles and 1:2 brew ratio for espresso. We use 17.5g in and 35g out.

At first there's pineapple acidity, followed by a blood orange sweetness and a smooth chocolate finish.

@Casa\_Espresso